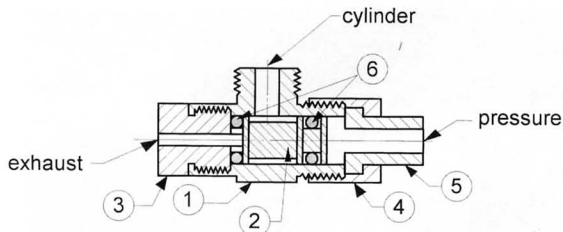
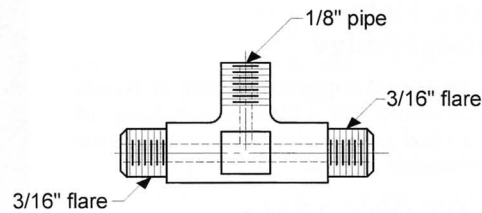


# 1-1/2" Scale Pressure-operated Cylinder Cocks

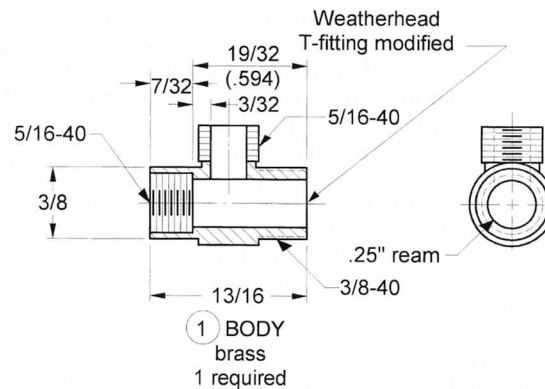
By Ben Nixon



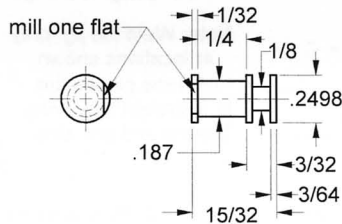
ASSEMBLY  
1-1/2" CYLINDER COCKS  
pressure operated  
automatic release on  
hydraulic overload



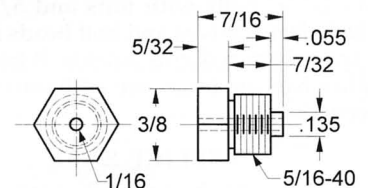
*Editor's Note:* From the ancient files of *Live Steam* comes this 1977 set of drawings from the late Ben Nixon of Southampton, Pennsylvania. He, along with Elmer Nuskey and some other cronies, built several Camelback switcher locomotives in 1-1/2" scale several years ago, and each one had a Ben Nixon cylinder cock. A conversation with Elmer Nuskey's son Peter revealed that dozens of Nixon cylinder cocks and other locomotive parts were machined and sold by Ben over the years, and they all worked beautifully. Ben had very little to say about the cylinder cocks shown here. A note attached simply stated: "These cylinder cocks are the same as used on my four switchers and they have been working without fault for years." Enjoy the drawings. I'm in hopes of finding yet other Ben Nixon drawings that we might share on these pages.



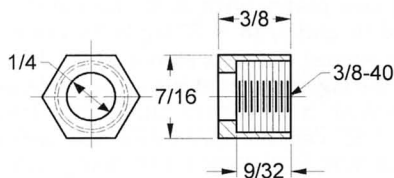
① BODY  
brass  
1 required



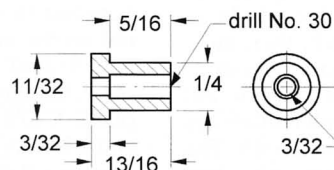
② PISTON  
stainless steel or brass  
1 required



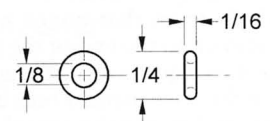
③ END CAP  
brass  
1 required



④ NUT  
brass  
1 required



⑤ BUSHING  
brass  
1 required



⑥ O-RING  
Buna "N"  
2 required  
Coat with oil before  
stretching over part.